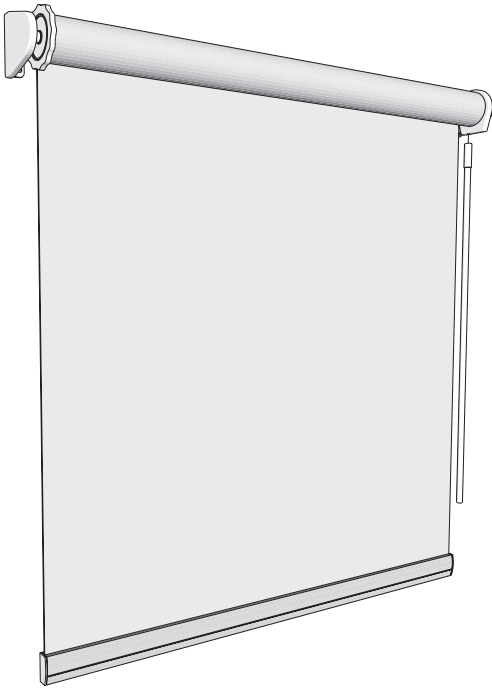




TIGER WINDOW FASHIONS

Open Roll Easy Spring Ultra Wand Installation Instructions

Step-by-step instructions for proper installation of your new roller shade.



Getting Started

Carefully unpack your shade(s) and check to make sure you have all of the following installation parts for each of your shades. It is recommended to read this manual before proceeding with the installation.

Parts Included:

- Mounting Bracket Screws
- Mounting Brackets (x2)

Note:

The mounting brackets must be securely attached to the mounting surface. If your screws do not hit wood studs you may have to use a different fastener available at any hardware store.

Recommended Tools:

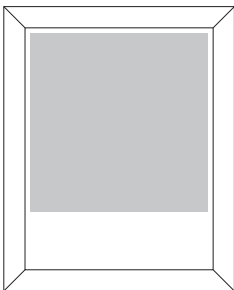
- Drill with 1/8" bit
- Phillips screwdriver
- Tape Measure

ATTENTION. According to the Window Covering Manufacturers Association Inc., all labels must not be removed from the product.

Note: For thicker fabrics or longer lengths you may be provided with the larger 2" Skyline bracket or the Large Tiger Designer Metal Bracket to accommodate the larger roll diameter. In this case please refer to the minimum mounting depth requirement chart.

Care and Cleaning

Minimal care and cleaning is needed to maintain the beauty of your shades. **To vacuum:** Use a hand held, low suction vacuum. **To dust:** Use a soft, clean cloth or feather duster. If using a mild cleaning solution, test on small area of fabric to make sure there will be no discoloration prior to application.



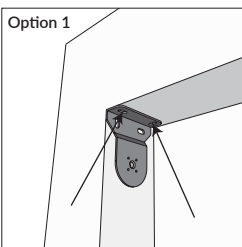
Step 1A - Mounting Bracket Installation - Inside Mount (IB)

Inside mount installations attach the brackets to the window frame, window molding, wall or ceiling, as shown. Brackets are universal so clutch may be mounted on either side. There are 5 ways to install the brackets. Choose which is best suited for your situation. For Outside mount options please refer to Step 1B.

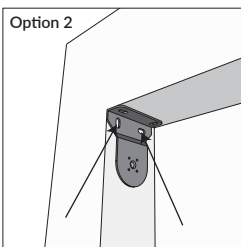
Minimum Required Mounting Depths:

- | | |
|--|------------------|
| • 1-1/2 in. Skyline Bracket | 2-1/4 in. (57mm) |
| • 1-1/2 in. Skyline Bracket Minimum Flush Mount Depth..... | 2-1/2 in. (64mm) |
| • 2 in. Skyline Bracket..... | 2-1/4 in. (57mm) |
| • 2 in. Skyline Bracket Minimum Flush Mount Depth..... | 2-1/2 in. (64mm) |

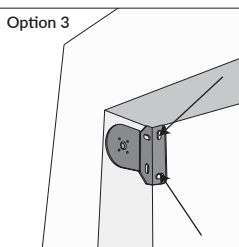
Install Brackets Upward



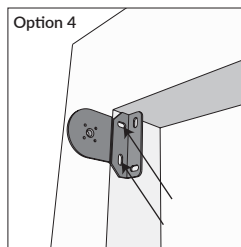
Holding the bracket in place flush with front of opening, mark the mounting screw locations in the top of the bracket (option 1) or the side of the bracket (option 2) with a pencil. Pre-drill marked locations using a 1/8 in. drill bit. Attach the brackets using the supplied mounting screws and a Phillips screwdriver.



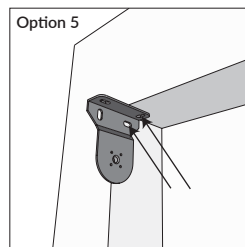
Install Brackets Straight On



Holding the bracket in place mark the mounting screw locations in the side of the bracket (option 3) or the back of the bracket (option 4) with a pencil. Pre-drill marked locations using a 1/8 in. drill bit. Attach the brackets securely using the supplied mounting screws and a Phillips screwdriver.



Shallow Depth Installations



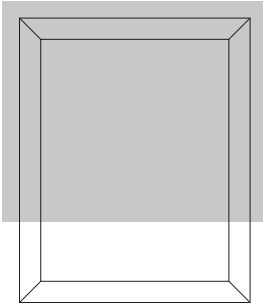
Windows that do not have enough depth to install both mounting screws in one of the 4 mounting options described; position the bracket upward and install one screw upwards into pre-drilled hole and one screw into the pre-drilled hole for the mounting screw location in the side of the bracket.



TIGER WINDOW FASHIONS

Open Roll Easy Spring Ultra Wand Installation Instructions

Step-by-step instructions for proper installation of your new roller shade.



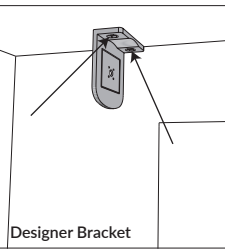
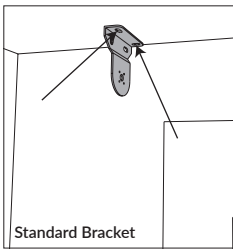
Step 1B - Mounting Bracket Installation - Outside Mount (OB)

Outside mount installations attach the brackets to the window casing, frame, molding, wall or ceiling, as shown. Brackets are universal so clutch may be mounted on either side. Choose which is best suited for your situation.

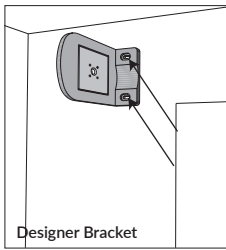
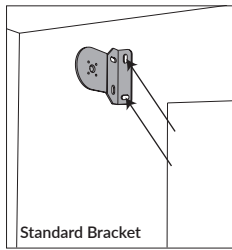
Minimum Required Mounting Depths:

- 1-1/2 in. Skyline Bracket Minimum Flat Vertical Surface 3/4 in. (19mm)
- 1-1/2 in. Skyline Bracket Projection..... 2-1/2 in. (64mm)
- 2 in. Skyline Bracket Minimum Flat Vertical Surface..... 3/4 in. (19mm)
- 2 in. Skyline Bracket Projection..... 3 in. (76mm)
- Designer Metal Bracket (M) Minimum Flat Vertical Surface..... 1-1/4 in. (32mm)
- Designer Metal Bracket (M) Projection..... 3 in. (76mm)
- Designer Metal Bracket (L) Minimum Flat Vertical Surface..... 1-1/4 in. (32mm)
- Designer Metal Bracket (L) Projection 4 in. (102mm)

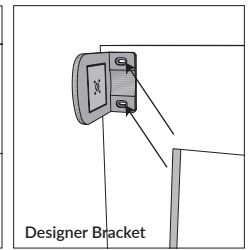
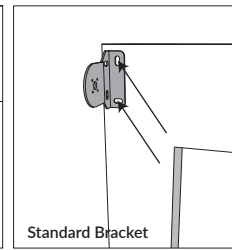
Ceiling Mount



Wall Mount



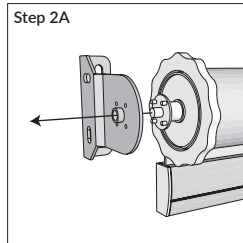
Casing/Frame/Molding Mount



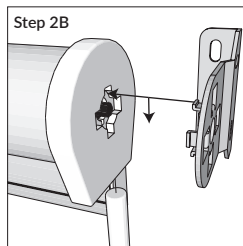
Fit the shade into the brackets and center the shade over the window (this may take two people). With a pencil, mark the wall on the side of one bracket. Remove the shade and then attach the one bracket with two screws. Next, insert the shade into the second bracket. Hold the shade up and insert other end into the already mounted bracket, making sure that the shade is level. Mark the wall on the side of the second bracket. Remove the shade and install second bracket with two screws.

Step 2 - Inserting the Shade

Step 2A: Align the center and the 4 small pins of the spring loaded pin end and insert into the holes of the mounting bracket.

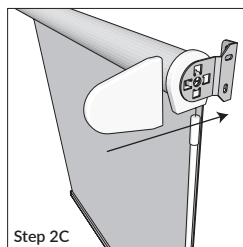


Step 2B: Make sure the wand exit on the wand control unit is pointing down, then while pushing the pin end towards its bracket, insert the hooks of the bracket straight into the wand control unit. Once the hooks are in the slots, gently pull down on the shade until the hooks have locked securely to the wand control unit.



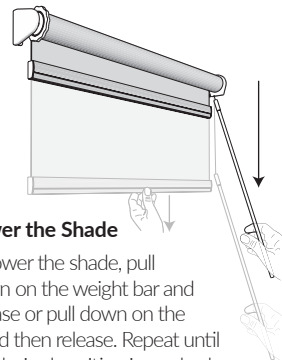
Step 2C (Optional Outside Mount):

Slide bracket covers over mounting brackets until the lock securely into place.



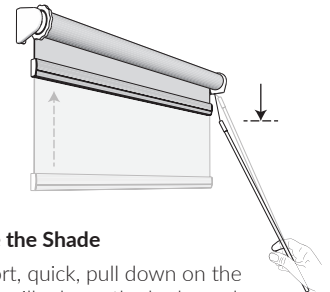
Note: Roller shades are not meant to be lowered past the ordered length and will come with additional material that is automatically added in length to conceal the roller tube and to help secure the fabric to the roll. Metal ball stops are placed in the chain to prevent the shade from being raised or lowered past its limits. When the length of the chain is shorter than the length of the shade, there will be no chain stop.

Step 3 - Operating the Shade



Lower the Shade

To lower the shade, pull down on the weight bar and release or pull down on the wand then release. Repeat until the desired position is reached.

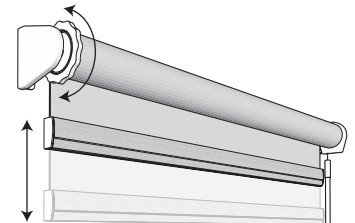


Raise the Shade

A short, quick, pull down on the wand will release the brake and the shade will rise to its pre-set stop limit.

Step 4 - (Optional) Set or Adjust Top Limit

To raise or lower the top limit position, make sure the shade is fully raised, then rotate the limiter head so that the shade moves up or down to the desired position.



Step 5 - Adjusting or Resetting Tension

If the shade will not raise to the top limit (not enough tension), raises too fast or beyond the top limit (too much tension), or has completely lost its tension during shipping, please refer to the separate "Adjusting or Resetting Tension" instruction sheet.