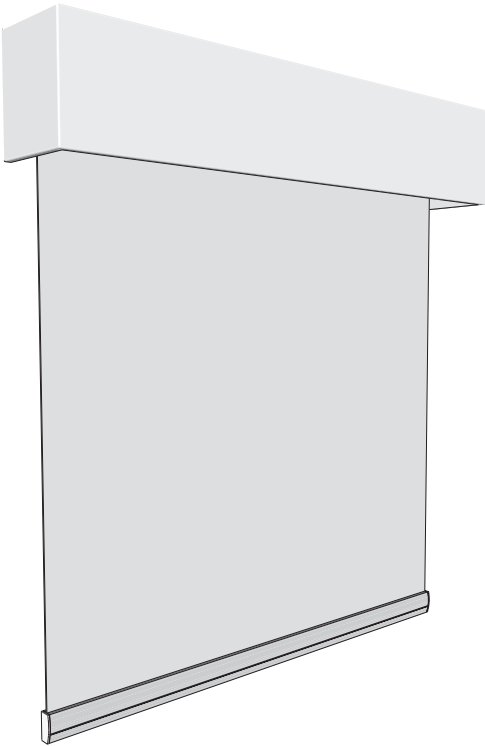




TIGER WINDOW FASHIONS

Fabric Wrapped Valance Soft Lift™ Roller Shade Installation Instructions

Step-by-step instructions for proper installation of your new roller shade.



Getting Started

Carefully unpack your shade(s) and check to make sure you have all of the following installation parts for each of your shades. It is recommended to read this manual before proceeding with the installation.

Parts Included:

- Mounting Bracket Screws
- Mounting Brackets (x2)

Note:

The mounting brackets must be securely attached to the mounting surface. If your screws do not hit wood studs, you may have to use a different fastener available at any hardware store.

Recommended Tools:

- Drill with 1/8" bit
- Phillips screwdriver
- Tape Measure

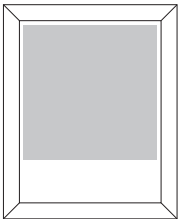
ATTENTION. According to the Window Covering Manufacturers Association Inc., all labels must not be removed from the product.

Note: For thicker fabrics or longer lengths you may be provided with the larger 2" Skyline bracket or the Large Tiger Designer Metal Bracket to accommodate the larger roll diameter. In this case please refer to the minimum mounting depth requirement chart.

Care and Cleaning

Minimal care and cleaning is needed to maintain the beauty of your shades. **To vacuum:** Use a hand held, low suction vacuum. **To dust:** Use a soft, clean cloth or feather duster. If using a mild cleaning solution, test on small area of fabric to make sure there will be no discoloration prior to application.

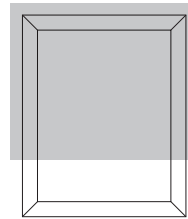
Step 1 - Select Mounting Option



Inside Mount (IB)

Inside mount installations attach the brackets to the window frame, window molding, wall or ceiling, as shown. Internal shade roll brackets are universal so clutch mechanism may be mounted on either side.

Minimum mount depth (100):	1-1/2 in. (38mm)
Minimum mount depth (120):	3 in. (76mm)
Minimum flush mount depth (100):	3-1/4 in. (83mm)
Minimum flush mount depth (120):	3-1/4 in. (83mm)



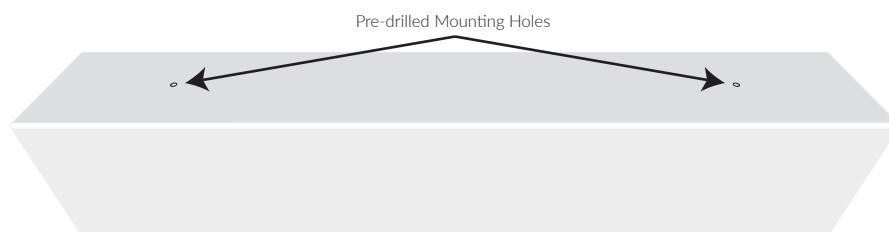
Outside Mount (OB)

Outside mount installations attach the brackets to the window casing, frame, molding, wall or ceiling, as shown. Internal shade roll brackets are universal so clutch mechanism may be mounted on either side.

Minimum flat vertical surface (100):	1-1/2 in. (38mm) wide
Minimum flat vertical surface (120):	1 in. (25mm) wide
Projections (100):	3-3/4 in. (95mm)
Projections (120):	4-1/4 in. (108mm)

Step 2 - Identify Mounting Hole Locations

The pre-drilled mounting holes for the fabric wrapped valance are located in the top of the valance. For inside mount installations, no mounting brackets are required. For outside mount installations the use of provided "L" brackets is required. Depending on the width of your shade there may be more than two pre-drilled holes.





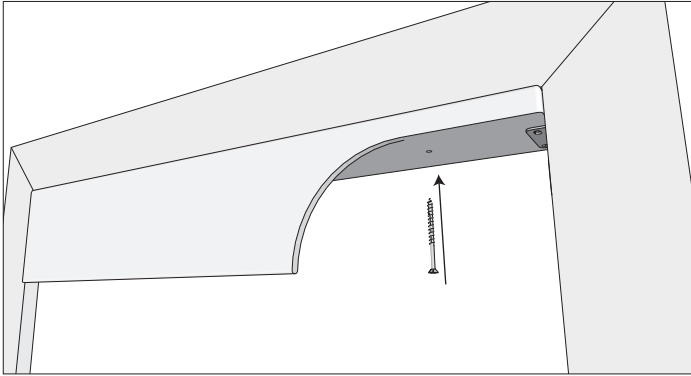
TIGER WINDOW FASHIONS

Fabric Wrapped Valance Soft Lift™ Roller Shade Installation Instructions

Step-by-step instructions for proper installation of your new roller shade.

Step 3 - Mount Valance

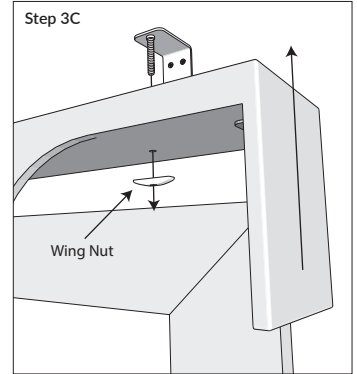
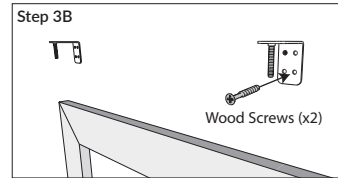
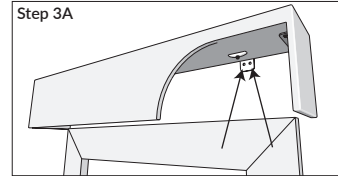
Inside/Ceiling Mount



For inside mount or ceiling mount installations, the valance attaches directly to the mounting surface, no mounting brackets are required. Position the Valance in the window opening and using the provided screws, screw up through the top of the valance into the window frame or ceiling. Repeat for each pre-drilled mounting hole and valance is securely mounted to surface.

Note: If your screws do not hit solid wood or wood studs, you may have to use a different fastener available at any hardware store.

Outside Mount



Step 3A: Begin by attaching the "L" brackets to the valance, then while holding the valance in position, mark the mounting hole locations in each "L" bracket.

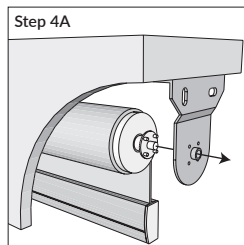
Step 3B: Next, remove the "L" brackets from the valance, reposition each bracket on wall, then mount to wall using provided screws.

Step 3C: Raise the valance up and align with mounting brackets until threaded post is through the top of the valance. Attach the valance to each "L" bracket using the supplied wing nuts.

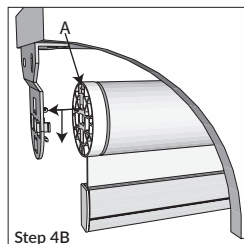
Note: The mounting brackets must be securely attached to the mounting surface. If your screws do not hit wood studs, you may have to use a different fastener available at any hardware store.

Step 4 - Inserting the Shade

Step 4A: Align the center and the 4 small pins of the spring loaded pin end and insert into the holes of the mounting bracket.



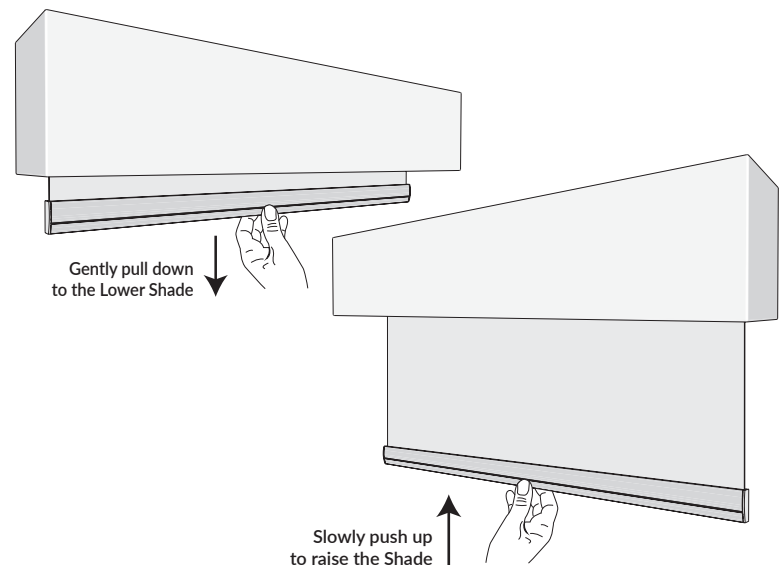
Step 4B: Make sure the arrow (A) of the spring control is pointing upward, then while pushing the pin end towards its bracket, insert the hooks of the bracket straight into the spring control. Once the hooks are through the slots, gently pull down on the shade until the hooks have locked securely to the spring control.



Note: Roller shades are not meant to be lowered past the ordered length and will come with additional material that is automatically added in length to conceal the roller tube and to help secure the fabric to the roll.

Step 5 - Raise or Lower the Shade

Pulling the weight bar down lowers the shade. Pushing the weight bar up raises the shade.



Step 6 - Adjusting or Resetting Tension

If the shade will not raise to the top limit (not enough tension), raises too fast or beyond the top limit (too much tension), or has completely lost its tension during shipping, please refer to the separate "Adjusting or Resetting Tension" instruction sheet.