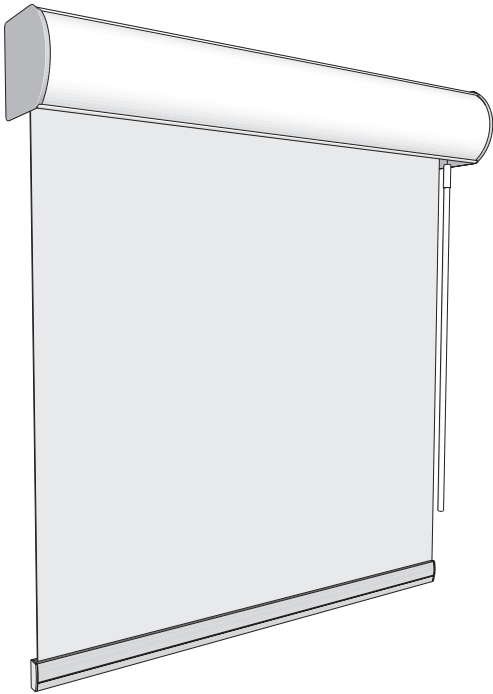




# TIGER WINDOW FASHIONS

## Cassette 100/120 Easy Spring Ultra Wand Roller Shade Installation Instructions

Step-by-step instructions for proper installation of your new roller shade.



### Getting Started

Carefully unpack your shade(s) and check to make sure you have all of the following installation parts for each of your shades. It is recommended to read this manual before proceeding with the installation.

### Parts Included:

- Mounting Bracket Screws
- Mounting Brackets (x2)

### Note:

The mounting brackets must be securely attached to the mounting surface. If your screws do not hit wood studs you may have to use a different fastener available at any hardware store.

### Recommended Tools:

- Drill with 1/8" bit
- Phillips screwdriver
- Tape Measure

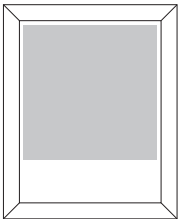
**ATTENTION.** According to the Window Covering Manufacturers Association Inc., all labels must not be removed from the product.

**Note:** For thicker fabrics or longer lengths you may be provided with the larger 2" Skyline bracket or the Large Tiger Designer Metal Bracket to accommodate the larger roll diameter. In this case please refer to the minimum mounting depth requirement chart.

## Care and Cleaning

Minimal care and cleaning is needed to maintain the beauty of your shades. **To vacuum:** Use a hand held, low suction vacuum. **To dust:** Use a soft, clean cloth or feather duster. If using a mild cleaning solution, test on small area of fabric to make sure there will be no discoloration prior to application.

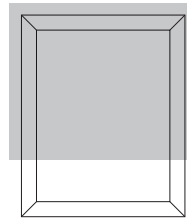
## Step 1 - Select Mounting Option



### Inside Mount (IB)

Inside mount installations attach the brackets to the window frame, window molding, wall or ceiling, as shown. Internal shade roll brackets are universal so clutch mechanism may be mounted on either side.

Minimum mount depth (100):	1-1/2 in. (38mm)
Minimum mount depth (120):	3 in. (76mm)
Minimum flush mount depth (100):	3-1/4 in. (83mm)
Minimum flush mount depth (120):	3-1/4 in. (83mm)



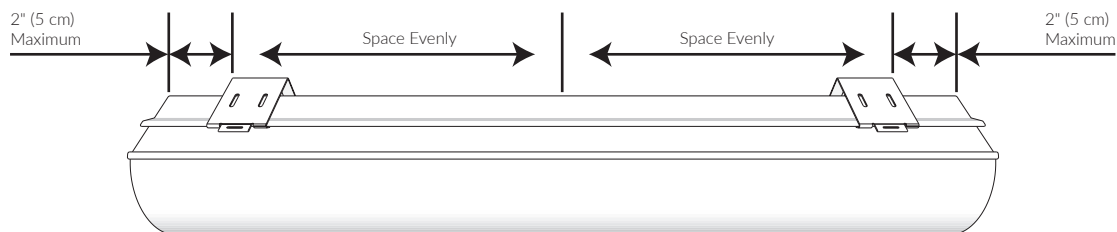
### Outside Mount (OB)

Outside mount installations attach the brackets to the window casing, frame, molding, wall or ceiling, as shown. Internal shade roll brackets are universal so clutch mechanism may be mounted on either side.

Minimum flat vertical surface (100):	1-1/2 in. (38mm) wide
Minimum flat vertical surface (120):	1 in. (25mm) wide
Projections (100):	3-3/4 in. (95mm)
Projections (120):	4-1/4 in. (108mm)

## Step 2 - Mark Position of Mounting Brackets

Before mounting the brackets to the wall or window frame, position the brackets on the cassette and mark the location of the mounting brackets making sure that the outside brackets are no further than 2 inches (5 cm) from the ends of the headrail. On wide shades, space the additional bracket(s) at equal intervals.





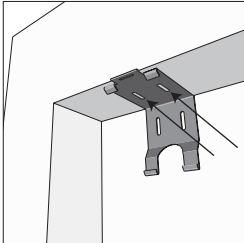
# TIGER WINDOW FASHIONS

## Cassette 100/120 Easy Spring Ultra Wand Roller Shade Installation Instructions

Step-by-step instructions for proper installation of your new roller shade.

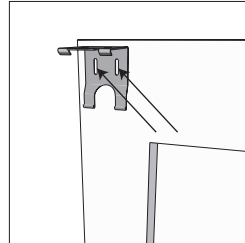
### Step 3 - Install Mounting Brackets

#### Inside Mount



Remove the brackets from the headrail assembly. Align each bracket with your location marks and while holding the bracket in place, mark the mounting screw locations in the top of the bracket with a pencil. Pre-drill marked locations using a 1/8 in. drill bit. Attach the brackets securely using the supplied mounting screws and a Phillips screwdriver.

#### Outside Mount

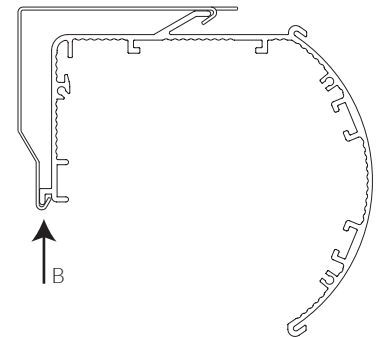
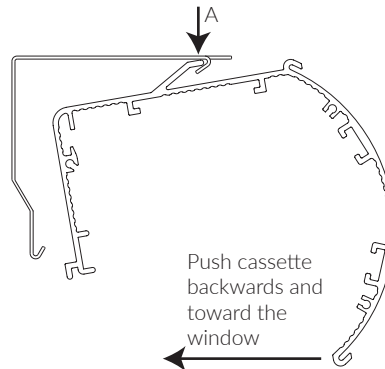


Remove the brackets from the headrail assembly. Align each bracket with your location marks and while holding the bracket in place, mark the mounting screw locations in the back of the bracket with a pencil. Pre-drill marked locations using a 1/8 in. drill bit. Attach the brackets securely using the supplied mounting screws and a Phillips screwdriver.

**Note:** The mounting brackets must be securely attached to the mounting surface. If your screws do not hit wood studs, you may have to use a different fastener available at any hardware store.

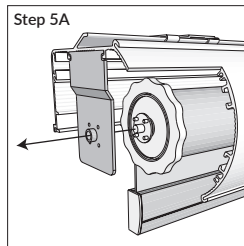
### Step 4 - Mount the Headrail

Position the headrail with the front panel (A) resting on the top lip of all brackets. Push the bottom front of the headrail firmly backwards and toward the window until the lip on the rear of the cassette engages the bracket and snaps into place, (B) as shown.

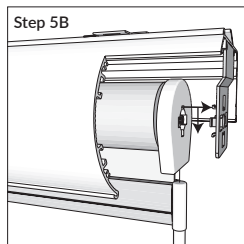


### Step 5 - Inserting the Shade

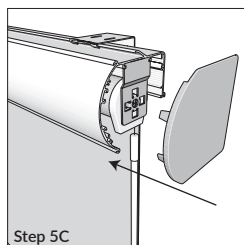
**Step 5A:** Align the center and the 4 small pins of the spring loaded pin end and insert into the holes of the mounting bracket.



**Step 5B:** Make sure the arrows and rib (A) of the spring control are pointing upward, then while pushing the pin end towards its bracket, insert the hooks of the bracket straight into the spring control. Once the hooks are through the slots, gently pull down on the shade until the hooks have locked securely to the spring control.

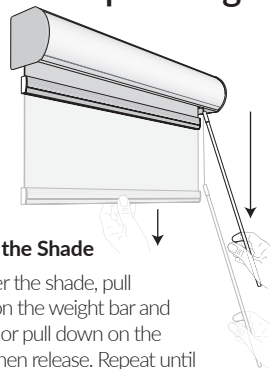


**Step 5C (Optional):** Align and insert the pins on the end caps with the headrail grooves and carefully push in until they lock securely into place.



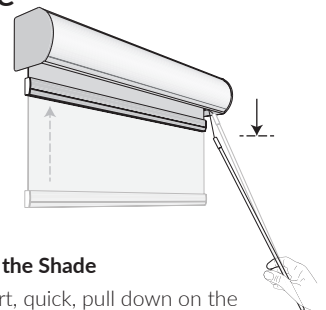
**Note:** Roller shades are not meant to be lowered past the ordered length and will come with additional material that is automatically added in length to conceal the roller tube and to help secure the fabric to the roll.

### Step 3 - Operating the Shade



#### Lower the Shade

To lower the shade, pull down on the weight bar and release or pull down on the wand then release. Repeat until the desired position is reached.

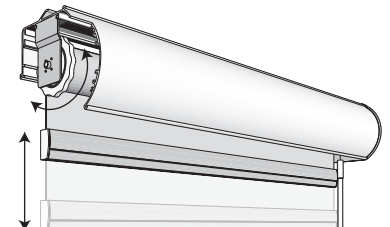


#### Raise the Shade

A short, quick, pull down on the wand will release the brake and the shade will rise to its pre-set stop limit.

### Step 4 - (Optional) Set or Adjust Top Limit

To raise or lower the top limit position, make sure the shade is fully raised, then rotate the limiter head so that the shade moves up or down to the desired position.



### Step 5 - Adjusting or Resetting Tension

If the shade will not raise to the top limit (not enough tension), raises too fast or beyond the top limit (too much tension), or has completely lost its tension during shipping, please refer to the separate "Adjusting or Resetting Tension" instruction sheet.