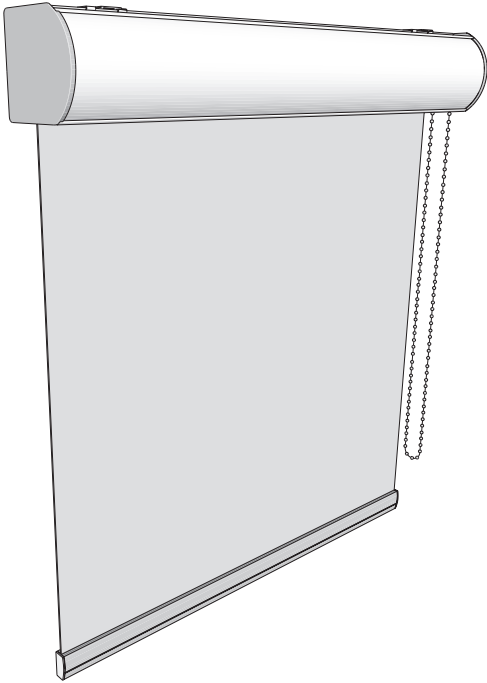




TIGER WINDOW FASHIONS

Cassette 100/120 Bead Chain Roller Shade Installation Instructions

Step-by-step instructions for proper installation of your new roller shade.



Getting Started

Carefully unpack your shade(s) and check to make sure you have all of the following installation parts for each of your shades. It is recommended to read this manual before proceeding with the installation.

Parts Included:

- Mounting Bracket Screws
- Mounting Brackets (x2)
- Bead Chain Tension Device

Note:

The mounting brackets must be securely attached to the mounting surface. If your screws do not hit wood studs, you may have to use a different fastener available at any hardware store.

Recommended Tools:

- Drill with 1/8" bit
- Phillips screwdriver
- Tape Measure

ATTENTION. According to the Window Covering Manufacturers Association Inc., all labels must not be removed from the product.

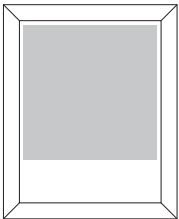
ATTENTION. To comply with child safety standards, all tension devices must be installed per the installation instructions provided in step 3.

Note: For thicker fabrics or longer lengths you may be provided with the larger 2" Skyline bracket or the Large Tiger Designer Metal Bracket to accommodate the larger roll diameter. In this case please refer to the minimum mounting depth requirement chart.

Care and Cleaning

Minimal care and cleaning is needed to maintain the beauty of your shades. **To vacuum:** Use a hand held, low suction vacuum. **To dust:** Use a soft, clean cloth or feather duster. If using a mild cleaning solution, test on small area of fabric to make sure there will be no discoloration prior to application.

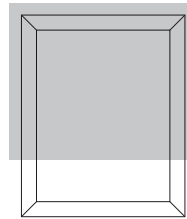
Step 1 - Select Mounting Option



Inside Mount (IB)

Inside mount installations attach the brackets to the window frame, window molding, wall or ceiling, as shown. Internal shade roll brackets are universal so clutch mechanism may be mounted on either side.

Minimum mount depth (100):	1-1/2 in. (38mm)
Minimum mount depth (120):	3 in. (76mm)
Minimum flush mount depth (100):	3-1/4 in. (83mm)
Minimum flush mount depth (120):	3-1/4 in. (83mm)



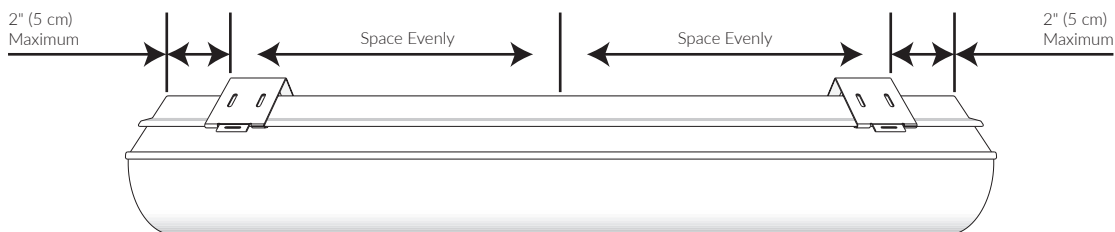
Outside Mount (OB)

Outside mount installations attach the brackets to the window casing, frame, molding, wall or ceiling, as shown. Internal shade roll brackets are universal so clutch mechanism may be mounted on either side.

Minimum flat vertical surface (100):	1-1/2 in. (38mm) wide
Minimum flat vertical surface (120):	1 in. (25mm) wide
Projections (100):	3-3/4 in. (95mm)
Projections (120):	4-1/4 in. (108mm)

Step 2 - Mark Position of Mounting Brackets

Before mounting the brackets to the wall or window frame, position the brackets on the cassette and mark the location of the mounting brackets making sure that the outside brackets are no further than 2 inches (5 cm) from the ends of the headrail. On wide shades, space the additional bracket(s) at equal intervals.





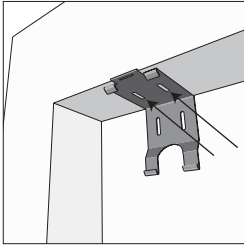
TIGER WINDOW FASHIONS

Cassette 100/120 Bead Chain Roller Shade Installation Instructions

Step-by-step instructions for proper installation of your new roller shade.

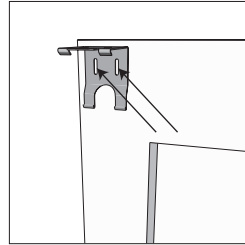
Step 3 - Install Mounting Brackets

Inside Mount



Remove the brackets from the headrail assembly. Align each bracket with your location marks and while holding the bracket in place, mark the mounting screw locations in the top of the bracket with a pencil. Pre-drill marked locations using a 1/8 in. drill bit. Attach the brackets securely using the supplied mounting screws and a Phillips screwdriver.

Outside Mount

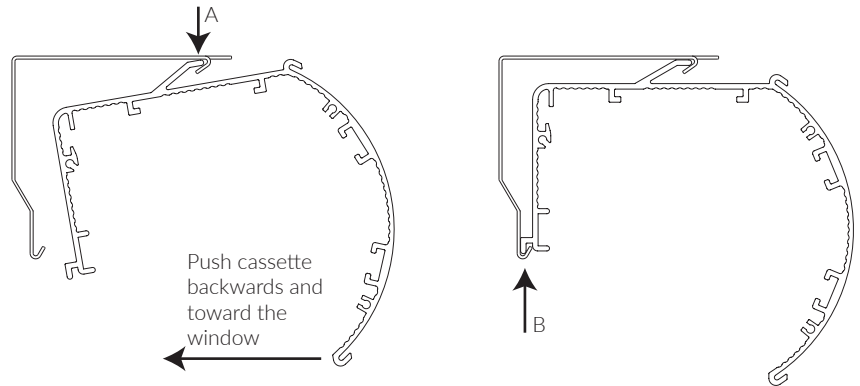


Remove the brackets from the headrail assembly. Align each bracket with your location marks and while holding the bracket in place, mark the mounting screw locations in the back of the bracket with a pencil. Pre-drill marked locations using a 1/8 in. drill bit. Attach the brackets securely using the supplied mounting screws and a Phillips screwdriver.

Note: The mounting brackets must be securely attached to the mounting surface. If your screws do not hit wood studs, you may have to use a different fastener available at any hardware store.

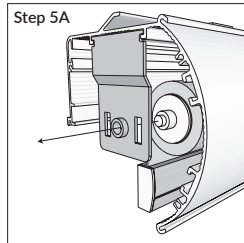
Step 4 - Mount the Headrail

Position the headrail with the front panel (A) resting on the top lip of all brackets. Push the bottom front of the headrail firmly backwards and toward the window until the lip on the rear of the headrail engages the bracket and snaps into place, (B) as shown.

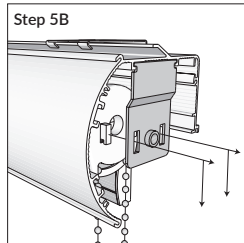


Step 5 - Inserting the Shade

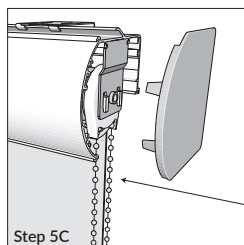
Step 5A: Insert the spring loaded pin end into the round hole of the internal mounting bracket. Pushing the pin end towards its bracket, insert the hooks on the clutch side straight into the two slots in the mounting bracket.



Step 5B: Once the two hooks are through the slots, gently pull down on the clutch until the two hooks have locked securely to the bracket. The bottom of the clutch should point straight down.



Step 5C (Optional): Align and insert the pins on the end caps with the headrail grooves and carefully push in until they lock securely into place.



Note: Roller shades are not meant to be lowered past the ordered length and will come with additional material that is automatically added in length to conceal the roller tube and to help secure the fabric to the roll. Metal ball stops are placed in the chain to prevent the shade from being raised or lowered past its limits. When the length of the chain is shorter than the length of the shade, there will be no chain stop.

Step 6 - Installing Tension Device

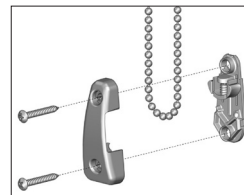
The tension device should be positioned on the window frame or the wall so that the tension device and bead chain do not interfere with operation of window treatment.

The tension device should be installed so that the bead chain is taut without stretching or pulling on it. Stretching the bead chain will cause excessive wear. Do not twist or cross the bead chain.

Once installed, the loop should pass freely through the tension device.

Note: When attaching to wood, included screws can be screwed directly into wood. When attaching to wall and metal, use anchors that are designed for such substrates available at your local hardware store.

Inside Mount



Outside Mount

