



TIGER WINDOW FASHIONS

Soft Lift™ Tension Adjustments - Cassette

Instructions for Adjusting Spring Tension on Soft Lift™ Equipped Shades.

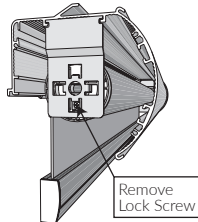
Before Adjusting the tension.

The tension of the shade has been set at the factory. To maintain this tension, your shade ships from the factory with a set screw to lock the shade roll in place during shipping.

It is recommended to remove this screw prior to installation to avoid having to remove the entire cassette assembly from the mounting brackets (Please refer to installation instructions).

If during installation this screw was not removed, before you can remove the shade roll to make tension adjustments this screw must be removed.

It is not necessary to replace the screw after adjusting the tension.



Determining Proper Spring Tension

The amount of tension needed for proper operation of the Soft Lift™ shade will vary for each installation depending on shade width, length and fabric weight.

When to Decrease Spring Tension

If there is too much tension the shade will slowly (or quickly) rise on its own and will not hold its position at rest.

When to Add Spring Tension

If there is not enough tension, you may not be able to fully raise the shade or shade will "slip" and will not hold its position at rest.

Step 1 - Remove Shade Roll

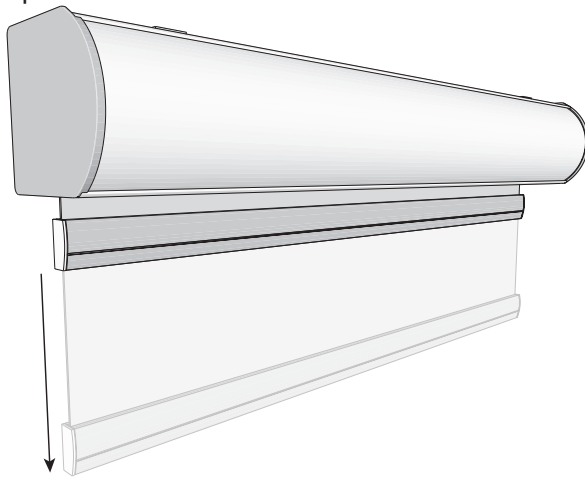
1A: If not already lowered, lower shade to its fully drawn position.

1B: With one hand hold the shade roll and the other hand firmly holding the tensioner device, carefully push the tensioner upwards on the bracket (1) then push the entire shade roll to the right (2) (or left depending on your installation configuration) until you can cleanly remove the shade roll from the shade roll hanging bracket.

ATTENTION! DO NOT LET GO OF THE TENSION DEVICE.

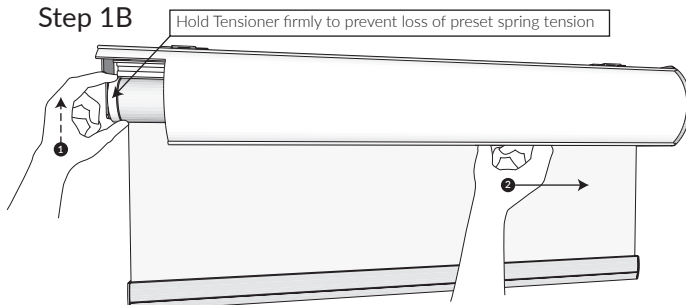
There is no brake (or lock) on the tensioner device. If the tensioner is not held firmly during this procedure it will release all preset tension in the spring and will need to be reset before proceeding.

Step 1A



Lower Shade to Fully Drawn Position

Step 1B

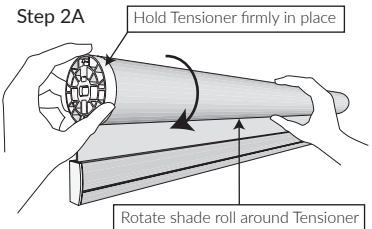


Step 2 - Adjust Tension

IMPORTANT! DO NOT LET GO OF THE TENSION DEVICE.

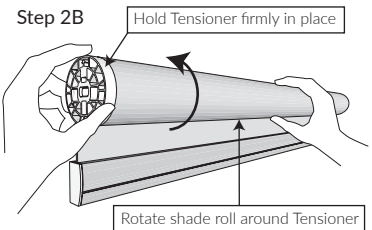
2A: Increase Tension

While firmly holding the tension device in place, slowly rotate the shade roll towards you (clockwise) one full rotation. Replace the shade into the shade roll brackets (Step 3) and test shade operation. Repeat as needed until desired tension is acquired.

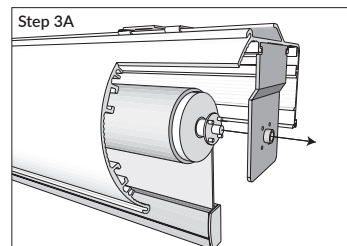


2B: Reduce Tension

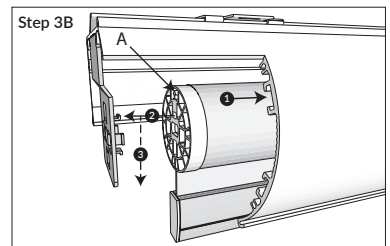
While firmly holding the tension device in place slowly rotate the shade roll away from you (counter clockwise) one full rotation. Replace the shade into the shade roll brackets (Step 3) and test shade operation. Repeat as needed until desired tension is acquired.



Step 3 - Reinsert the Shade Roll



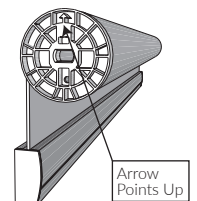
3A: While firmly holding the tension device and shade roll, align the center and the 4 small pins of the spring loaded pin end of the shade roll and insert into the holes of the shade roll hanging bracket.



3B: With the arrow of the tensioner (A) pointing upward, push the pin end towards its bracket, depressing the pin (1), align and insert the hooks of the left bracket into the tensioner device (2), then gently pull down on the shade until the hooks have locked securely to the tensioner (3).

Important!

When Reinstalling the shade roll make sure the arrow on the tensioner is pointing up to properly seat on bracket.



NOTE: Adding too much tension to the device may cause damage. Only add as much tension as is necessary to properly raise the shade.